

## Storage Container with Drive Parts

KL-4999-20

The storage container **KL-4999-20** allows a clear and easy way of working with the wheel bearing / silentbloc tools of the **KL-0039-.. Series**.

The drive parts included in this kit are used in conjunction with the tools of the **KL-0039-.. Series** for removing and installing bearings, bushings, joints etc.

### Scope of Delivery:

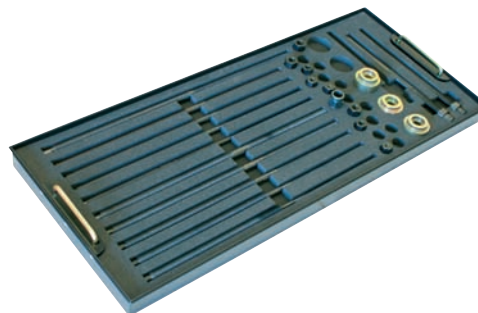
#### KL-4999-20 - Storage Container with Drive Parts

Part No.	Description	Qty.
KL-4999-201	Storage container for drive parts	1
KL-4999-202	Drive part tool set for storage container	1

### Scope of Delivery:

#### KL-4999-202 Drive Part Tool Set for Storage Container

Part No.	Description	Qty.
KL-0039-1910-1	Pull spindle M10x1.25	1
KL-0039-1910-2	Shoulder nut M10x1.25	2
KL-0039-1912-1	Pull spindle M12	1
KL-0039-1912-2	Shoulder nut M12	2
KL-0039-1914-1	Pull spindle M14	1
KL-0039-1914-2	Shoulder nut M14	2
KL-0039-1916-1	Pull spindle M16	1
KL-0039-1916-2	Shoulder nut M16	2
KL-0039-1918-2	Shoulder nut M18	1
KL-0039-1920-1	Pull spindle M20	1
KL-0040-2245-1	Pull spindle M10x1.25	1
KL-0040-2244-1	Pull spindle M12x590	1
KL-0040-2243-1	Pull spindle M14x590	1
KL-0040-2242-1	Pull spindle M16x590	1
KL-0040-2545-1	Pull spindle M18	1
KL-0040-3009	Clamping nut	2
KL-0039-1002	Retainer adaptor for clamping nut and pressure spindle with O-ring	1
KL-0039-1003	Retainer adaptor for hydraulic cylinder with O-ring	1
KL-0039-1004	Retainer adaptor for pressure spindle Ø18 mm with O-ring	1
KL-0039-1011	Retainer adaptor for mechanical spindle	2
KL-0040-3008	Pull spindle	1
KL-0039-1930	Pressure spindle M20x350 with O-ring	1
KL-0040-2241	Pressure spindle M16	1

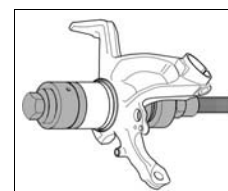
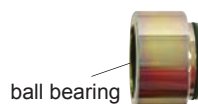


4

## Retainer Adaptor for Mechanical Spindle

KL-0039-1011

This tool is necessary to retain the various **KL-0039-..** or **KL-0043-..** press/support sleeves if these are to be inserted by using the mechanical drive. The built-in ball bearing ensures accurate and professional working, even under intensive load.



## Safety Belt for Mechanical Set

KL-0040-2592

By using the safety belt **KL-0040-2592** on the vehicle and on the mechanical pulling device of the **KL-0039-..Series**, the latter is prevented from falling.

### Scope of Delivery:

#### KL-0040-2592 Safety Belt for Mechanical Set

Part No.	Description	Qty.
KL-0040-2590	Safety Belt for Hydraulic Cylinder 17t	1
KL-0040-2591	Safety Belt Adaptor for mechanical set	1

